



GAT MONTHLY MEMBERSHIP PROGRESS REPORT

Results as of: 2/28/2022

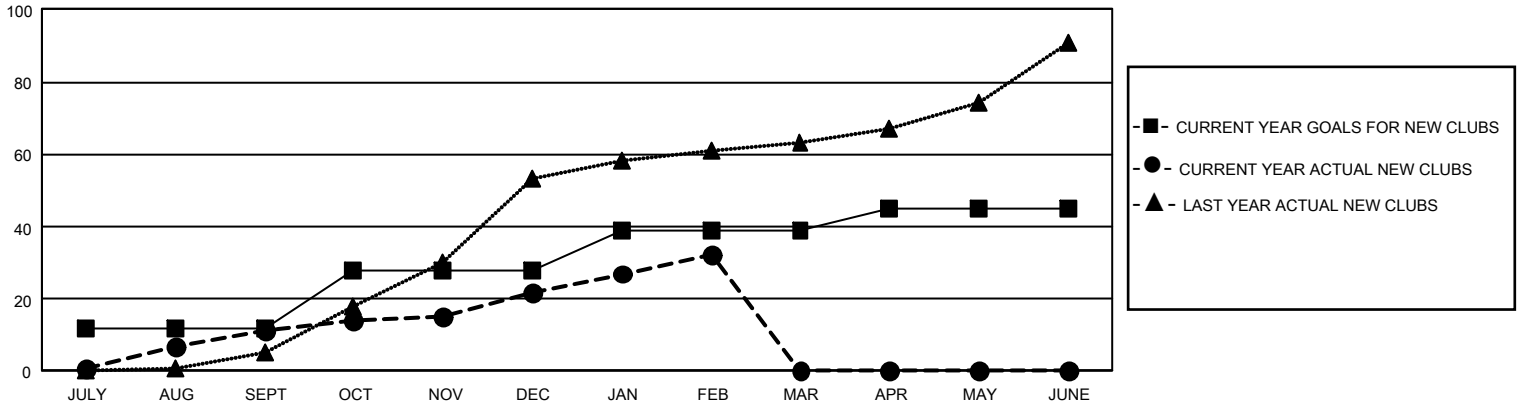
GMT Constitutional Area 3, Group B

REPORT DOES NOT INCLUDE CLUBS IN UNDISTRICTED AREAS.

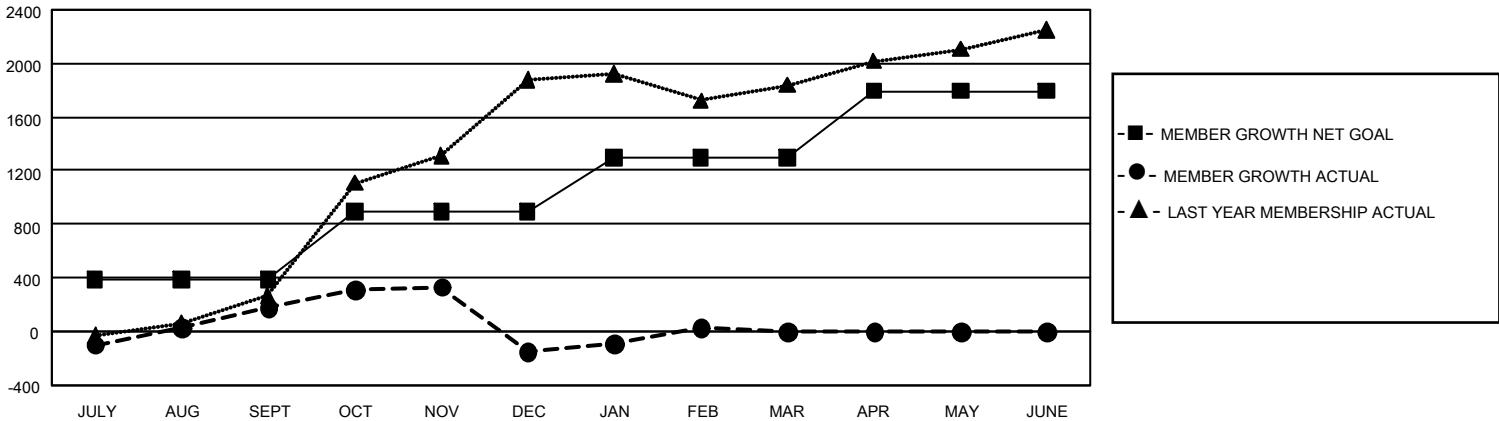
Clubs			
RESULTS FOR 2021-2022			
QUARTER	NEW CLUB GOAL	NEW CLUBS	DROPPED CLUBS
JULY/AUG/SEPT	36	11	6
OCT/NOV/DEC	48	11	4
JAN/FEB/MAR	33	10	3
APR/MAY/JUNE	18	0	0

Members			
RESULTS FOR 2021-2022			
QUARTER	MEMBER GROWTH NET GOAL	MEMBER GROWTH ACTUAL	DROPPED MEMBERS ACTUAL (including transfers)
JULY/AUG/SEPT	387	884	666
OCT/NOV/DEC	507	896	1,202
JAN/FEB/MAR	405	466	270
APR/MAY/JUNE	497	0	0

GOALS AND ACTUAL NEW CLUBS CUMULATIVE



GOALS AND ACTUAL MEMBERS CUMULATIVE



DROPPED CLUBS: 13	363 CLUBS OF 845 ADDED 1 OR MORE NEW MEMBERS	<u>GENDER DISTRIBUTION</u>	
		MALE 10,422 (42.86%)	FEMALE 13,893 (57.13%)
<u>DROPPED MEMBERS</u>		NON BINARY 0 (0.00%)	PREFER NOT TO ANSWER 3 (0.01%)
DECEASED 135	CLICK HERE FOR CUMULATIVE MEMBERSHIP DATA	TOTAL FAMILY UNIT MEMBERS 6,593	
CLUB CANCELLED 213		FAMILY MEMBERS PAYING HALF DUES 3,839	
OTHER 1,791			
TOTAL 2,139			